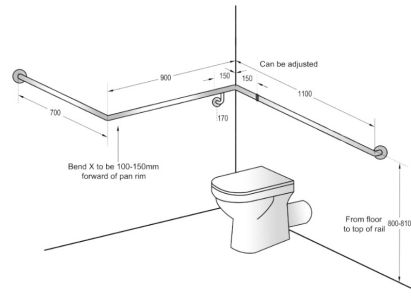


MLR114MOD_SS

30° Flush Mount Wrap Around Modular Grab Rail RH in Satin Stainless Steel

Dimensions: 1100mm X 900mm X 700mm



SPECIFICATION

Material	#304 Grade Stainless Steel - 32mmØ
Finish	Satin Stainless Steel
Mounting	Concealed Fix - 78mmØ Mount Stand-off 60mm +/-
Mounting Point	Horizontal @ 170mm Off Wall Including Stand-off

NOTES

- For Metlam Australia Care and Maintenance Guidelines, Installation Instructions, Product Specifications, and Warranty Details, please refer to the Product User Guide Tab.

 **This unit is accessible compliant when installed in accordance with AS1428.1 guidelines.**

 **For more in depth information, visit the product online:**
https://metlam.com.au/category/ambulant-and-accessible-compliant-grab-rail/MLR114MOD_SS